



**ASTILLEROS DEL ULLA**





# ABOUT THE COMPANY

At Astilleros del Ulla, each vessel is the result of a passion and dedication that is reflected in every detail. We have a wealth of, broad, wide experience in the construction of professional fiberglass vessels, carrying out projects tailored to each shipowner and providing exceptional service to all of our clients.

We have a total area of 20.000m<sup>2</sup>, 6.000m<sup>2</sup> are covered. These are distributed in three large sheds for the construction and assembly of vessels, a mechanical workshop, and a chemical product warehouse. In addition, we have two slipways and a dock for launching and hauling out large vessels.

The company's main asset is its human capital, with a team of highly skilled professionals with extensive experience in the latest technologies. We only use high-quality materials, provided by reputable suppliers who have undergone rigorous quality controls. We have obtained quality assurance and environmental certification according to ISO 9001 and ISO14001.

The shipyard works with both external engineering firms and designs from our own technical office. The construction system is adapted to the needs of each project, using hand lay-up, vacuum infusion, R.T.M light; monolithic or sandwich techniques. We are constantly developing new products and keeping up with most cutting edge technologies, in order to always offer the higher quality.







# AQUACULTURE SUPPORT VESSELS



Designed according to the needs and preferences of each shipowner, these vessels are specifically adapted for work in mussel rafts, fish farms, and long-line culture. They have spacious, clear decks and high-capacity cranes. They are built with either conventional or single-use mold techniques, offering endless possibilities for dimensions and designs, in both monohulls and catamarans.



Plural and reliable, Astilleros del Ulla's vessels have demonstrated their quality for many years.







High-quality fittings are used, with a focus on safety and ease of maintenance. Interior finishing is carefully attended to, always offering the shipowner customized solutions.





Both conventional hydraulic and electrical installations are used for the deck machinery. Always committed to constant innovation, the latest renewable energy technologies have been incorporated into their design, such as wind turbines, solar panels...



# FISHING VESSELS

Our range of fishing vessels is very broad, covering from boats used for small-scale fisheries to large and highly equipped vessels. We have experience in building fishing vessels for various types of fishing, such as purse seiners, trawlers, longliners, gillnetters, pole-and-line, and multi-purpose vessels. Both the general layout and the specifications are developed according to the specific needs of each owner. Our boats operate in various national and international fishing grounds.



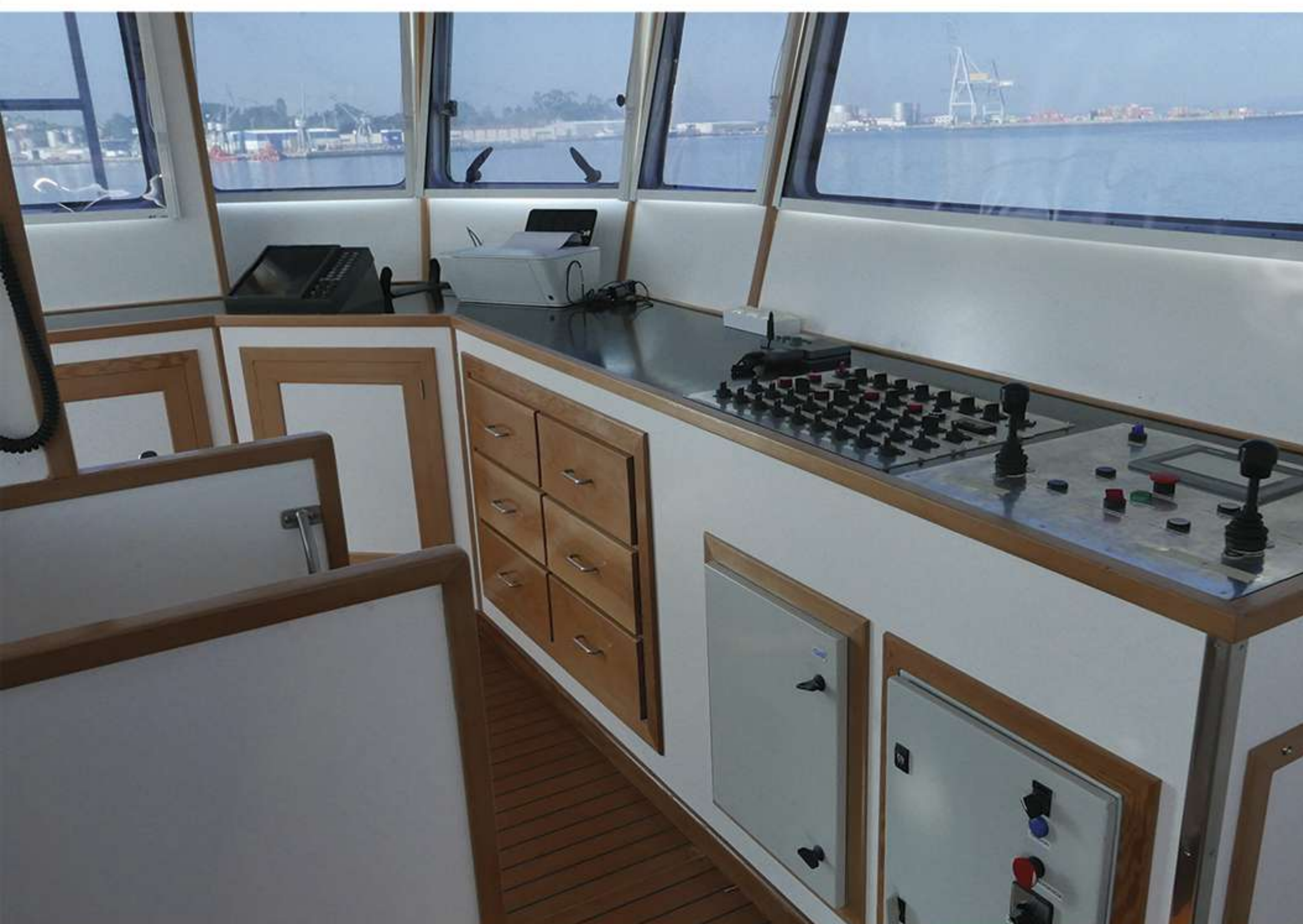
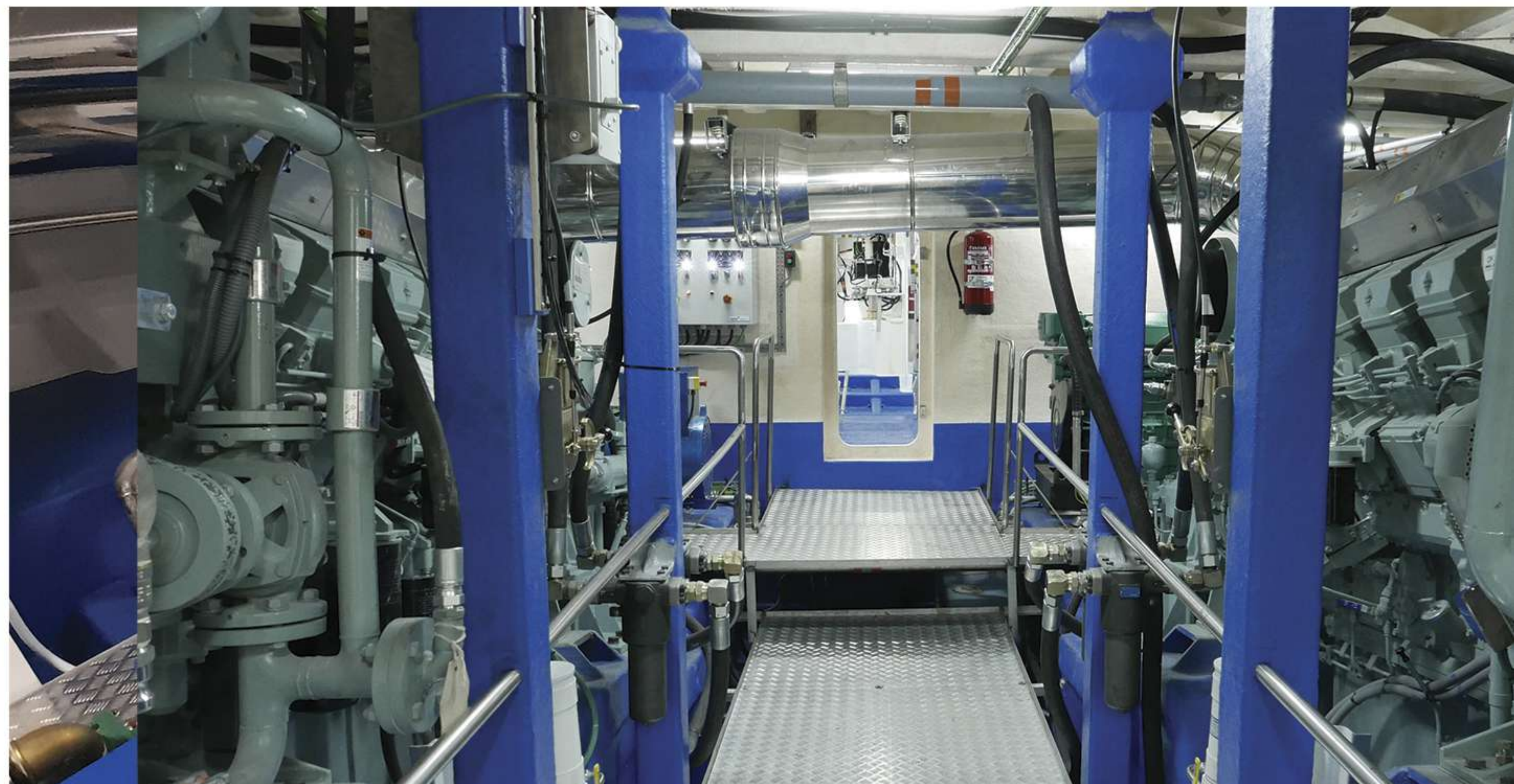












Onboard equipment incorporating high technology, electronic systems and fishing aids such as state-of-the-art sonar and echo sounders, positioning with transverse and azimuth thrusters, etc. Different preservation systems, whether for fresh storage, live wells, freezing holds, RSW...



# PATROL VESSELS

Designed according to the owner's requirements and government regulations, constructed to the highest standards of quality, patrol boats built by Astilleros del Ulla are a great example of technical expertise and commitment to customer satisfaction.



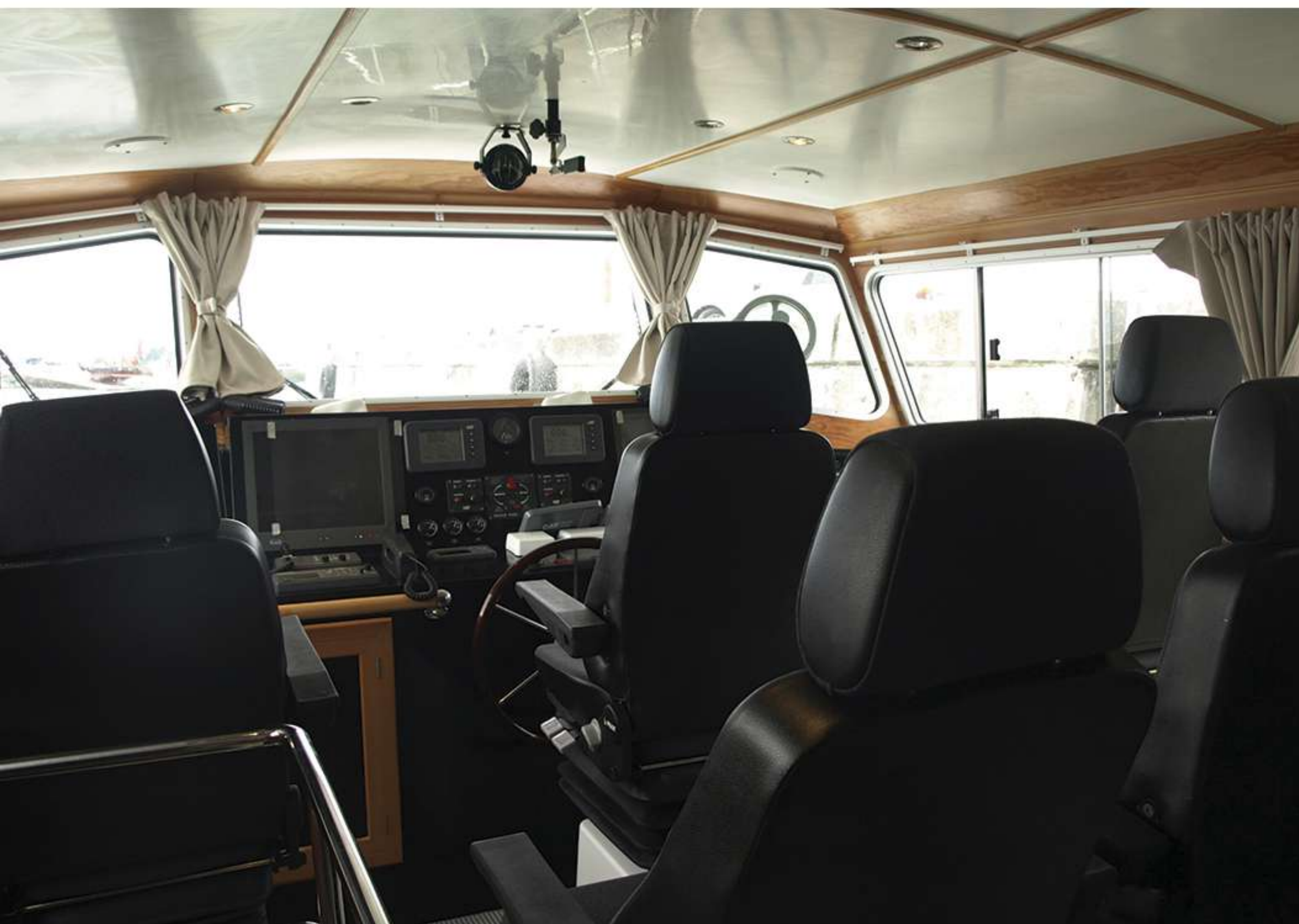












Great speed with maximum safety, thanks to the monolithic lamination of the hull and the use of vacuum-infused sandwich construction for the deck, bulkheads, and superstructures. At the owner's request, ballistic protection using aramid fibers can also be incorporated.



# PILOT BOATS



Our pilot boats have an extremely reinforced structure, wide and sturdy fender profiles around the perimeter, and a design that allows safe navigation in adverse sea conditions with excellent maneuverability. Customized design allows for adaptation of length and propulsion, with the option to incorporate one or two shaft lines, waterjets, etc.





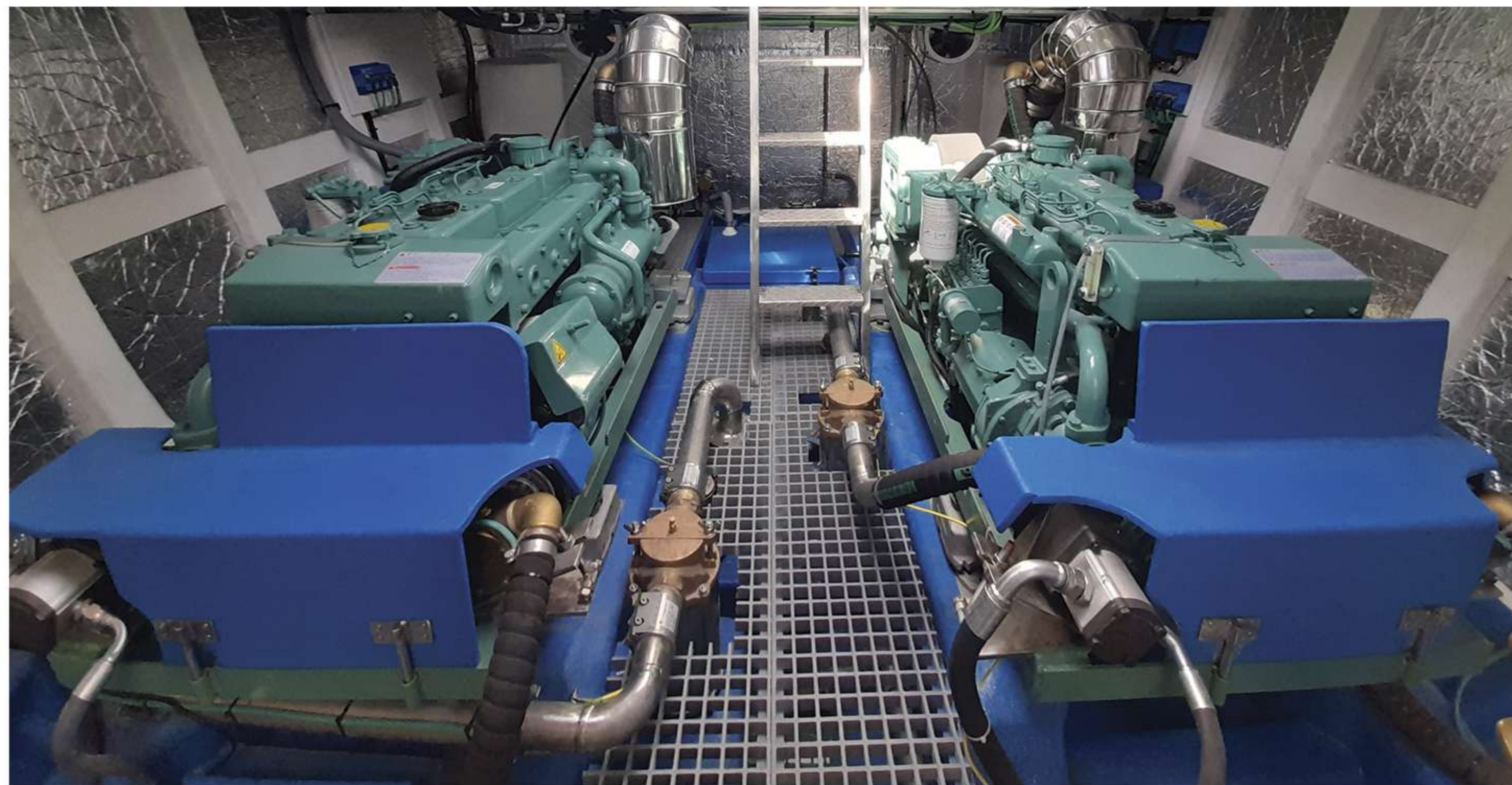
One of the most important features of pilot boats is the deep "V" shape of their hull, which provides excellent performance in adverse sea conditions.





All the hardware is of the highest quality, strongly anchored to the structure. Safety and convenience of the design are also carefully considered.





**The layout of the bridge and the internal arrangements of these boats are jointly studied and defined by the owner and the shipyard to ensure that the specific needs of the end user are met.**



## OTHER VESSELS



Astilleros del Ulla specializes in the construction of custom-made boats to meet the needs of each owner: passenger boats with hybrid, 100% electric, or conventional propulsion, oceanographic vessels, maritime assistance boats, diver transportation vessels, fishery training boats, fishery support vessels, and more. Adapting to each project is our specialty.





We carry out high complexity installations, where high-end equipment with advanced technological content are combined with precise mounting.









The wide variety of boats we build always have common denominators: safety, reliability, comfort, and low maintenance. The collaboration with the owner in defining the characteristics of the boat is complete.





**ASTILLEROS DEL ULLA**

Paseo de Xelmírez, 16  
36612, Catoira (Pontevedra)  
Spain

(+34) 986 523 461

[www.astillerosdelulla.com](http://www.astillerosdelulla.com)

[correo@astillerosdelulla.com](mailto:correo@astillerosdelulla.com)